

Marin County Child Care Commission
Quality and Workforce Committee - Meeting Agenda

Monday, May 8th, 2017 - 12 to 2pm

At the Marin County Office of Education – 1111 Las Gallinas Ave. San Rafael.
Members: Commissioners Tomsky, Myers, Johnson, Barton, Lombardi,
Beardsley, Negussie, Trahan

1. Check in / Agenda Review/ Quick Business (15)

Ms. Tomsky

- Review and approval of March 2017 Committee meeting minutes*

1. Hot Topic (30)

Ms. Erickson

2.1. Our Presentation to the Board of Supervisors

- How to highlight Worthy Wages Campaign - <http://worthywage.weebly.com/>

2. Report from Committee members: Implementing our 2016-2017 Committee's Workplan (30)

- 3.1 ECE Career Pathways
- 3.2 Workforce Diversity & Wages
- 3.3 Professional Development

3. Updates (30)

- Professional Development programs:

Ms. Myers

- California Transitional Kindergarten Stipend Program (CTKS)
- AB212
- CARES

- Quality Improvement Programs:

Ms. Barton

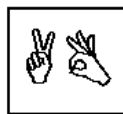
- Marin Quality Counts: QRIS and IMPACT
- QI Project
- PreK-3 Initiative

- New legislation and studies related to Quality & Workforce

Ms. Erickson/ALL

4. Other Updates/Current Issues from the Field/Announcements (15)

ALL



In accordance with the Americans with Disabilities Act, if you need special assistance (i.e. auxiliary aids or services) in order to participate in this public meeting, please contact the Clerk of the Board of Supervisors by calling (415) 499-6172 (TTY) Or (415) 499-7331 (voice) **at least** five (5) business days prior to the meeting.

All public meetings and events sponsored or conducted by the County of Marin are held in accessible sites. Requests for accommodations may be made by calling (415) 473-4381(voice/TTY) or 711 for the California Relay Service or e-mailing disabilityaccess@co.marin.ca.us at least four work days in advance of the event. Copies of documents are available in alternative formats, upon written request



Marin County Child Care Commission
1111 Las Gallinas Ave. San Rafael, CA 94903
(415) 499-5827 • erickson@marinschools.org
<http://www.marinschools.org/ECE>